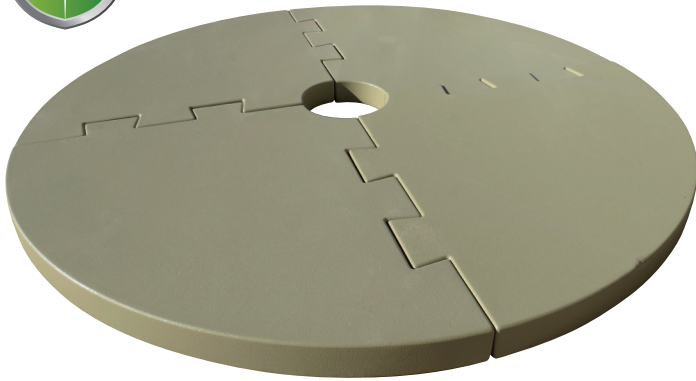
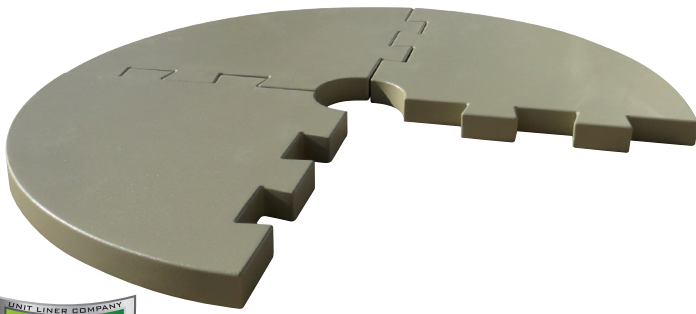




INTERLOCKING POLYURETHANE TANK BASES

Foam core tank supports are light-weight and easy to install. The patented interlocking design offers identical parts meaning that you never get to the job site with the wrong fit. Tough polyurethane coating is UV stable and corrosive resistant. Our unique design is easily assembled by a two man crew. Available to fit any tank size



- 120 Mils of durable polyurethane coating is the toughest in the industry
- Dual Corrosive Resistant Urethane Core and polyurethane Coating
- UV Resistant Coating
- Installs completely above grade, no punctures in the secondary containment liner
- Interlocking pieces stay put during tank installation and high winds
- Assembled tank pads are easily repositioned to accommodate site changes
- Sloped profile of the Sloped Polyurethane Tank Bases is the only tank stand that fully supports cone bottom tanks with full contact

Item	Height	Colors
12' Flat Polyurethane Base	6" or 14" Exterior Height	Carlsbad Canyon, Covert Green, Desert Tan
13.5' Flat Polyurethane Base	15" Exterior Height	Carlsbad Canyon, Covert Green, Desert Tan
15.5' Flat Polyurethane Base	6" Exterior Height	Carlsbad Canyon, Covert Green, Desert Tan



Carlsbad Canyon



Covert Green



Shale Green



Desert Tan



INTERLOCKING POLYURETHANE TANK BASES

FOAM CORE	POLYURETHANE PAD	EPS PADS
Density (minimum)	2.2 lb	1.58 lb
Compressive Strength	25-30 psi	10.56 psi
Flexural Strength	60.6	22.23

POLYUREA COATING	POLYURETHANE PAD	EPS PADS
Hardness, Shore D (ASTM D-2240)	57	55
Tensile Strength, psi (ASTM D-412)	4000	1600-1800
Tear Strength, pli (ASTM D-624)	400	350-400
Elongation, % (ASTM D-412)	250	300-350